

NE CONNECTION

A PUBLICATION OF NORTHEAST OKLAHOMA ELECTRIC COOPERATIVE



CHOCOLATE LOVER RECIPES

NOEC SUPPORTS SCHOOLS
THROUGH TAX DISTRIBUTIONS

FEBRUARY 2020



Touchstone Energy® Cooperatives

NE CONNECTION

A PUBLICATION OF NORTHEAST OKLAHOMA ELECTRIC COOPERATIVE

Northeast Connection is published monthly to communicate with the members of Northeast Oklahoma Electric Cooperative.

OFFICERS & TRUSTEES

Dandy A. Risman - District 5, President
John L. Myers - District 4, Vice-President
Benny L. Seabourn - District 2, Secretary-Treasurer
Jimmy Caudill - District 9, Assis. Secretary-Treasurer
Charles A. Wyrick - District 1
Brian Kelly - District 3
Sharron Gay - District 6
James A. Wade - District 7
Bill R. Kimbrell - District 8

MANAGEMENT TEAM

Daniel Webster - General Manager/CEO
Shane Burgess - Engineering Design & Special Projects
Larry Cisneros - Engineering
David Cusick - NRS-ROW
Ricky Hignite - Information Technology
Lindley Leforce - Member Services
Tim Mixson - Safety & Loss Control
Connie Porter - Financial Services
Nick Sutton - Operations

VINITA HEADQUARTERS

27039 South 4440 Road, Vinita, OK 74301

GROVE OFFICE

212 South Main, Grove, OK 74344

BUSINESS HOURS

Monday-Friday, 8am to 4:30pm

Offices are closed Saturday, Sunday and holidays.

AVAILABLE 24 HOURS AT

1.800.256.6405

If you experience an outage:

1. Check your switch or circuit breaker in the house and on the meter pole to be sure the trouble is not on your side of the service.
2. When contacting the cooperative to report an outage, use the name as it appears on your bill, and have both your pole number and account number ready.

Please direct all editorial inquiries to Public Relations at 800.256.6405 or email publicrelations@noec.coop

This institution is an equal opportunity provider and employer. If you wish to file a Civil Rights program complaint of discrimination, complete the USDA Program Discrimination Complaint Form, found on-line at www.ascr.usda.gov/complaint_filing_cust.html, or at any USDA office, or call 866.632.9992 to request the form. You may also write a letter containing all of the information requested in the form. Send your completed complaint form or letter to us by mail at U.S. Department of Agriculture, Director, Office of Adjudication, 1400 Independence Avenue, S.W., Washington, D.C. 20250-9410, by fax 202.690.7442 or email at program.intake@usda.gov.



RESILIENCY

Larry Cisneros
Manager of Engineering

Resiliency. A word often used in various manufacturing processes is now being used by electric cooperatives. Why resiliency? Merriam-Webster's second definition of resiliency describes

it as "an ability to recover from or adjust easily to misfortune or change." Many utilities offer different responses when asked what resiliency means to them. Increased financial investment in newer technology is one popular answer.

What does resiliency mean here at Northeast Oklahoma Electric Cooperative? We believe it describes perfectly our resolution to innovate and implement on our way to achieving realistic goals of maintaining, building, and upgrading our electrical system. It is also our ability to withstand, or recover quickly from, many types of events, whether man-made or natural—events that cause those annoying blinks, voltage dips, or unwelcome outages.

Much can be said about the investment in our system with the newest technology, but achieving the goal of resiliency still boils down to basic factors like time and maintenance. Our cooperative continues to invest time into the careful study of its infrastructure. We strive to expose weaknesses before they become a bigger problem. We plan for a balanced system—one that is physically capable of withstanding the harshest elements while at the same time poised to accommodate both present and future capacity. We review needed system upgrades. We replace aging conductor with larger, newer conductor for strength and capacity. These upgrades benefit the system now and well into the future. We manage the testing of older power poles and replace inadequate ones with newer, stronger poles. Many of these changes are incorporated into a comprehensive work plan that serves as a guide for present and future years.

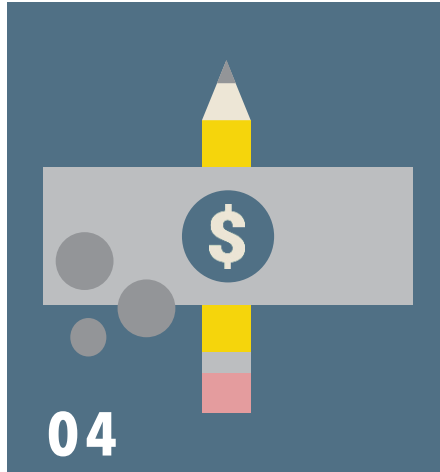
One of the items demanding our attention is the maintenance of rights-of-way everywhere cooperative power lines pass through the system. This process includes removing trees and trimming branches that encroach on the utility rights-of-way. It is also important to identify and remove those trees outside of the utility rights-of-way that pose a threat to lines. Of course, permission from landowners always helps expedite this process. Right-of-way clearing will always factor into good cooperative maintenance planning.

Continued on page 5.



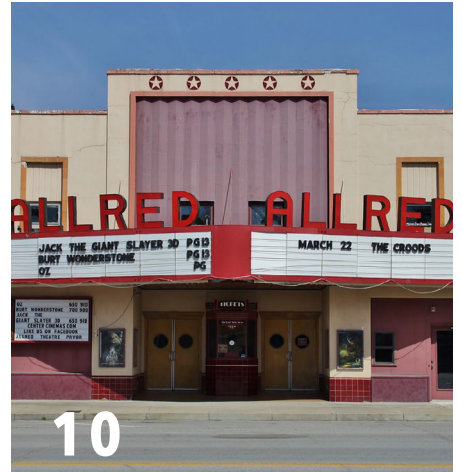
06

MEMBER BUSINESS HIGHLIGHT



04

NOEC SUPPORTS SCHOOLS



10

CO-OP CONNECTION DISCOUNTS



02

DOWNED POWER LINE SAFETY

\$100 IS HIDING!

Search the pages of NE Connection for a 6-digit account number with an asterisk on each side. For example: *XXXXXX*. Compare it to your account number, which appears on your monthly electric bill. If they match, contact the cooperative at 918.256.9332, by March 2, 2020, to claim a \$100 credit on your electric account.

Events are published as space allows and must be submitted at least 60 days in advance. Send information, including phone number for publication, to Northeast Connection Events Calendar, PO Box 948, Vinita 74301 or to sarah.wilhelm@noec.coop.

FEBRUARY 2020

S	M	T	W	T	F	S
						1 •
2 •	3 •	4 •	5 •	6 •	7 •	8 •
9 •	10 •	11 •	12 •	13 •	14 •	15 •
16 •	17	18	19	20 •	21 •	22 •
23 •	24	25	26	27	28	29

- TULSA BOAT, SPORT & TRAVEL SHOW**
 Jan 27-Feb 2 | Tulsa
 Tulsa Expo Square
 918.519.1210
- TULSA WOMEN'S EXPO**
 Feb 8-9 | Tulsa
 Tulsa Expo Square
 203.259.3351
- GROVE PLAYMAKERS PRESENTS "UNDERNEATH THE LINTEL"**
 Jan 31-Feb 15 | Grove
 121 W 3rd Street
 918.786.8950
- MIDSOUTH TACKLE, HUNTING & BOAT SHOW**
 Feb 14-16 | Grove
 Grove Civic Center
 918.520.3474
- GROVE HOME & GARDEN SHOW**
 Feb 7-9 | Grove
 Grove Civic Center
 918.786.9079
- DARRYL STARBIRD'S NATIONAL ROD & CUSTOM CAR SHOW**
 Feb 14-16 | Tulsa
 Tulsa Expo Square
 918.257.4235
- WINTER VINTAGE & WOODEN BOAT RESTORATION WORKSHOP**
 Feb 8 | Vinita
 35602 S 4467 Road
 918.693.1855
- MIAMI LITTLE THEATRE PRESENTS STEEL MAGNOLIAS**
 Feb 20-23 | Miami
 Coleman Theatre
 918.540.2425

TIPS

DOWNED POWER LINE SAFETY

- **Move Away** If you see a downed power line, move away from it and anything touching it. The ground around power lines, 35 feet away or more, may be energized and dangerous.
- **Assume Line is Live** You cannot tell whether or not a power line is energized just by looking at it. You should assume that all downed power lines are live.
- **Use Small Steps** The proper way to move away from the power line is to shuffle away with small steps, **keeping your feet together and on the ground at all times.** This will minimize the potential for a strong electric shock.
- **Don't Touch** If you see someone who is in direct or indirect contact with the downed line, do not touch the person. You could become the next victim. Call 911 for help.
- **Don't Move Line** Do not attempt to move a downed power line or anything else in contact with it by using an object such as a broom or stick. Even non-conductive materials like wood or cloth, can conduct electricity if even slightly wet.
- **Avoid Water** Be careful not to touch or step in water near where a downed power line is located.
- **If In A Car** If your car comes in contact with a downed power line while you are inside, stay in the car. Honk your horn to summon help, but direct others to stay away from your car.



WE CAN LIGHT UP YOUR NIGHT

Everyone can use a little extra daylight now and then, especially as the seasons change and the days grow shorter. Northeast Oklahoma Electric Cooperative can help lengthen the days for its residential members with a 175-watt metered security light.

If you would like more information about a metered security light, please contact one of our member services representatives toll free at 1.800.256.6405, or locally at 918.256.6405.

BOLT FIBER NEAR YOU

BOLT Fiber Optic Services continues to work hard, extending service as fast as we can. We have made considerable progress in two of our customer service areas (CSA). Three new areas have been added to our construction workplan. If you are in these areas and interested in service, now is a great time to call! 844.256.BOLT (2658)

Ongoing Progress MINO & FRNE CSA's

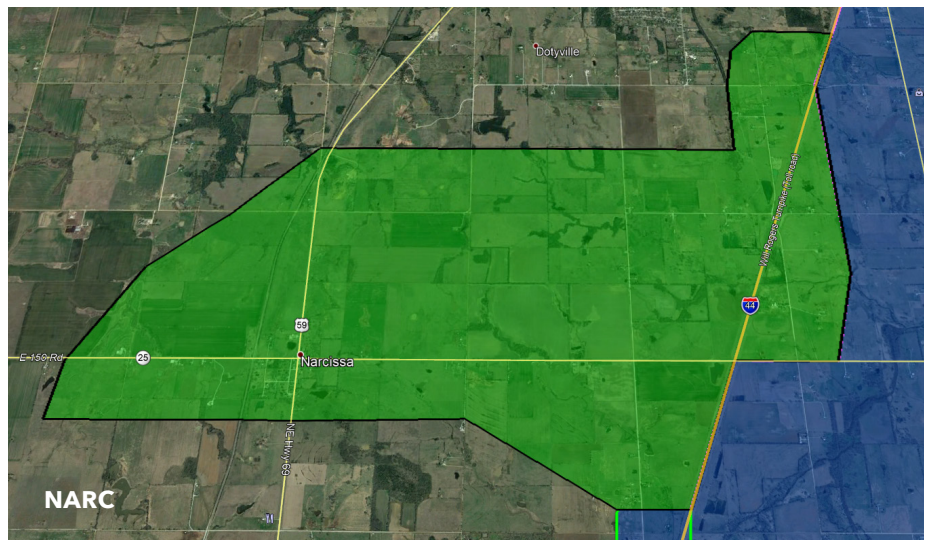
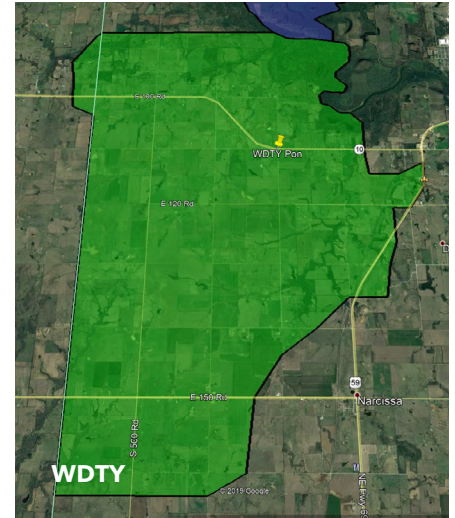
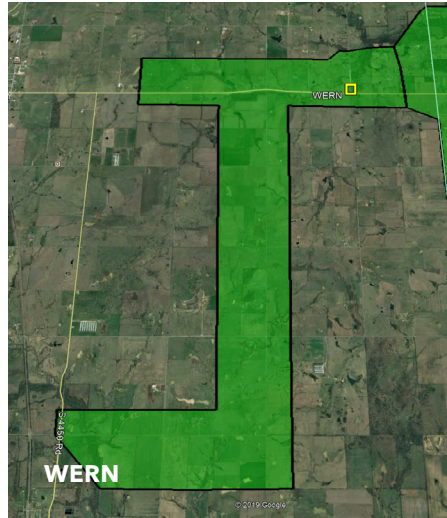
Mainline construction has been completed for this area. Crews are now building drops. "Drops" are the fiber runs from the mainline to the outside of a residence or business. Once the drops are completed, our crews will be scheduled to do home installs for those who have signed up for BOLT services. Once home installation is complete, services will be active.

The MINO area lies northwest of Miami and due west of Cardin, Commerce and Picher. The FRNE area is southeast of Miami.

New Areas WDTY, NARC and WERN CSA's

Mainline construction is taking place now along the main roadways. Weather-permitting, we anticipate drops being built in March. Following the drops, home installs will be scheduled.

These areas are located (approx.) north of Bluejacket to Highway 59, east to Highway 69, south to Narcissa. To see the service area map, please go to boltfiber.com.



Sign Up Now!

Drops and line extensions are staked during the initial construction on all pre sign-ups. These will be built upon the completion of the mainline. Members are encouraged to sign up early to ensure your residence or business will be included in the initial staking and build process. Additional sign-ups will be staked and built in subsequent phases.

Call now to visit with one of our customer service representatives about getting signed up! 844.256.BOLT (2658).

BOLT Fiber Optics provides high-speed internet, HD television programming, and VoIP telephone service. Voted "Best of the Best" for Grand Lake and Miami!

NOEC SUPPORTS

AREA SCHOOLS THROUGH TAX DISTRIBUTIONS

During the year ending December 2019, Northeast Oklahoma Electric Cooperative paid gross receipts tax totaling \$1,466,711.34. Ninety-five percent of this total was divided among the 32 schools in the cooperative's service area.

Not-for-profit electric cooperatives are exempt from paying federal income tax. However, they do pay fuel, state and federal unemployment tax, Social Security, Medicare and gross receipts tax, in lieu of the ad-valorem tax paid by for-profit utility companies.

The gross receipts tax collected for a given year represents two percent of each member's electric bill. Ninety-five percent of this tax is paid directly to schools within our service area, based on the miles of line the cooperative maintains within each school district.

The remaining five percent of the collected gross receipts tax is withheld by the state for collection and handling fees.

By paying a percentage of the cooperative's gross income to support area school districts, Northeast Oklahoma Electric Cooperative members are sharing in the responsibility of educating today's youth. The table provided below lists the school systems and the amounts they received. ***979424***

REMINDER TO STUDENTS

2020 Deadlines Approaching

Youth Tour Essay Contest: March 6
for high school juniors

College Scholarship Application: March 20
for high school seniors

Energy Camp Essay Contest: April 3
for eighth graders

Contact Clint Branham at clint.branham@noec.coop



AMOUNT PAID: BY SCHOOL

Adair	\$72,854.63	Inola	\$3,273.36	Pryor	\$42,836.11
Afton	\$37,921.55	Jay	\$143,490.02	Quapaw	\$36,089.08
Bluejacket	\$88,522.54	Kansas	\$69,045.27	Salina	\$49,504.03
Chelsea	\$59,416.95	Kenwood	\$10,058.64	Sequoyah	\$957.14
Chouteau Mazie	\$42,248.13	Ketchum	\$37,130.49	Turkey Ford	\$18,044.33
Cleora	\$28,818.05	Leach	\$20,704.09	Vinita	\$45,039.15
Colcord	\$62,310.64	Locust Grove	\$31,804.29	Welch	\$88,829.50
Commerce	\$19,196.65	Miami	\$36,516.85	White Oak	\$36,332.76
Fairland	\$53,852.11	Moseley	\$26,153.98	Wickliffe	\$15,135.87
Foyil	\$254.43	Oaks	\$12,912.19	Wyandotte	\$76,220.03
Grove	\$189,752.81	Osage	\$11,485.67		

TOTAL

\$1,466,711.34

OPERATION ROUND UP

GIVES TO LOCAL CASA



Want to volunteer for CASANEOK and make a difference in your community?
Visit casaneok.org or call 918.923.7276.

CASA (Court Appointed Special Advocates) of Northeast Oklahoma serves as child advocates, speaking in the best interest of abused and neglected children in our courts of Craig, Delaware, Ottawa, Rogers, and Washington counties, including the Quapaw Nation. They promote and support quality, volunteer representation for children to provide each child safety, a permanent, nurturing home, and the opportunity to thrive.

NOEC's Operation Round Up program was able to give \$1,857.88 in funding to support CASA's purchase of two audio/visual set-ups for pre-training sites in Miami and Claremore. This technology will help CASA further its mission of ensuring child safety and permanent home placement.

NOEC's Nick Bowers and Cindy Hefner present a check to Angela Henderson.

RESILIENCY

CONTINUED FROM INSIDE COVER

Our cooperative continues to review the implementation of newer and affordable technologies that assist in improving resiliency. There are cutting-edge tools we can put to use that allow enhanced response to events. These devices let us quickly identify problems in the system and are great for recognizing and solving problems. We are committed to investing time and maintenance to the continued development of a resilient system. For you, our member, planning comes down to our commitment to you.

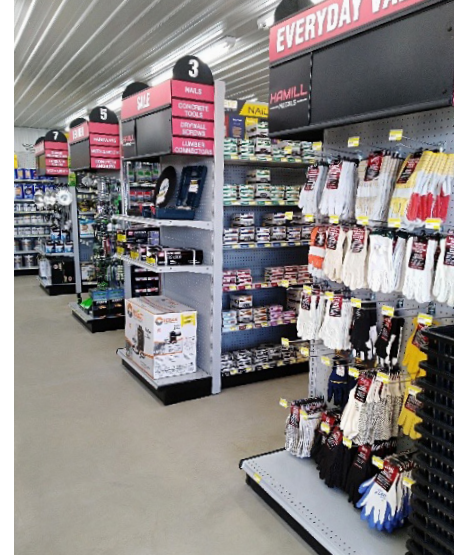
Rest assured that we will be maintaining both aerial and underground conductor that supplies electrical power to you when you need it.

At the end of the day, you want to be confident of one thing: when the light switch is switched on, the lights are going to come on and stay on. That is the kind of resiliency we resolve to accomplish here at Northeast Oklahoma Electric Cooperative.



MEMBER SPOTLIGHT

HAMILL METALS



Builders across the Midwest have been trusting Hamill Metals to meet their construction materials needs for more than 30 years. But what many may not know is that the Hamill family was doing business long before they began selling metal in 1987.

The Hamill family has been a fixture in the Adair community since 1912. In those early years, Hamill Farms was simply a thriving dairy and livestock operation. Over time, the family began doing business on a larger scale when they opened the doors to the public on what would become a trusted farm implement dealership.

The farming community in and around Mayes County always knew the Hamill family to be dependable and hard-working. That reputation and work ethic has never changed.

“Our great-grandparents started doing business back in 1957,” explained 29-year-old John Hamill, one of three fourth-generation siblings who keep the family business going strong. “When our grandmother passed in 1987, we moved the business to its current location and kept going.”

John added with a chuckle: “Even though our family has had a farm here for generations, it turns out the steel and lumber business was better than milking cows.”

Hamill Metals carries a large selection of steel and pipe, from angles and channels to purlins and specialty steel. If you need those metal products cut to length, they have a pair of Hem Saws in the shop that can handle the job.

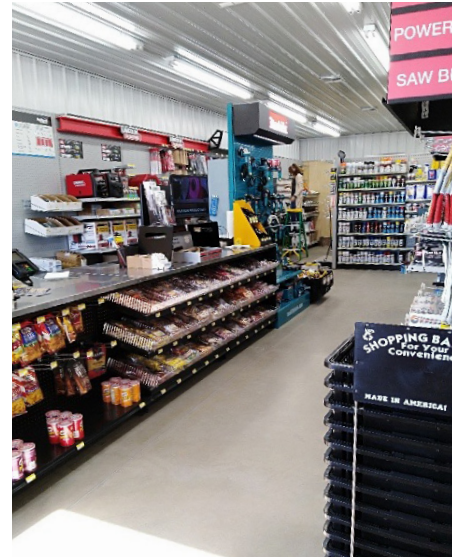
Hamill is not just metal either. The company now also stocks a large inventory of lumber, including pine, fir, and treated products. Can't pick up your building supplies? No matter. Hamill also delivers.

John said the newest addition to Hamill Metals is a hardware store that also carries power tools, welders, and welding supplies.

“We have continued to add product lines since we have started and have grown our ability to offer delivery service,” John explained. “Business is good and we have excellent support locally in both the Adair and Pryor communities.”

"If you are looking for the most knowledgeable staff and best prices on your lumber and metal needs Hamill Metals is the place to go. Family owned and operated they will absolutely take care of you! I would recommend them every time!"

-Facebook, Keith Malley



Hamill Metals is open Monday through Friday from 7:30 a.m. to 5 p.m., and on Saturday from 7:30 a.m. to noon. Come out and browse the store's inventory and speak to one of the five family members—there's Jared, John, Katy, Gene and Trenda—who are always more than willing to field any questions a customer may have.

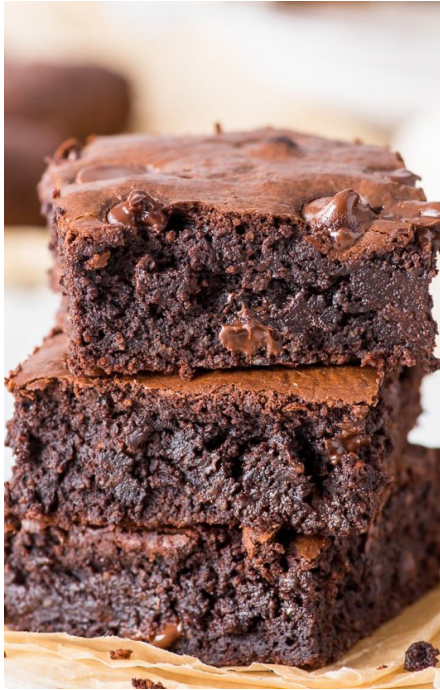
Hamill Metals is located at 2976 West 410 Road, just two miles southwest of Adair. You can also visit and "like" them on Facebook @ hamillmetals, or contact Trenda or John by phone at 918.785.2841 for additional information.

Hamill Metals is a family-owned, Northeast Oklahoma Electric Cooperative member business.





FEBRUARY IS NATIONAL CHOCOLATE LOVER'S MONTH



SUBMITTED BY: PAM PITTS

(HEALTHY) BROWNIES

- **8 Pieces Unsweet Baking Chocolate**
- **3/4 Cup Coconut Shortening**
- **2 Cups Coconut Sugar**
- **2 Eggs**
- **1 tsp Vanilla**
- **1/3 Cup Coconut Flour**
- **1/3 Cup Tapioca Flour**
- **1/3 Cup Almond Flour**

Melt unsweet baking chocolate and coconut shortening together. Then stir in eggs, vanilla, coconut flour, tapioca flour, and almond flour. Pour mixture into an 8x8 inch greased pan and bake for 40 minutes at 350° F.

Preparer Note: Add chocolate chips to make these brownies extra fudgy.



SUBMITTED BY: MARY K. THRAPP

CREAM DROP FUDGE

- **1 Package Old Fashioned Cream Drops**
- **1 Cup Peanut Butter**
- **3 tsp of Butter**

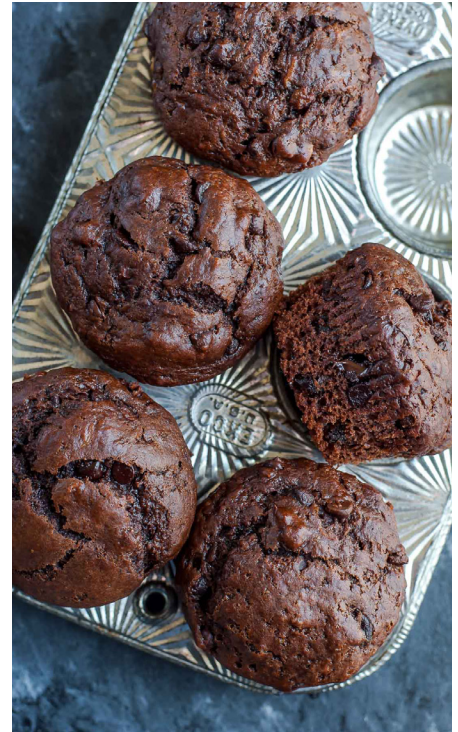
Put all ingredients in a bowl and microwave for 1 minute, or until cream drops are soft (melted). Pour into a pan and cool. Cut into small pieces.

SUBMITTED BY: LISA COUCH

DOUBLE CHOCOLATE BANANA MUFFINS

- 1 1/2 Cups Flour
- 1 Cup Sugar
- 1/2 Cup Baking Cocoa
- 1 tsp Baking Soda
- 1/2 tsp Salt
- 1/4 tsp Baking Powder
- 1 1/2 Cups Mashed Banana
- 1/3 Cup Vegetable Oil
- 1 Egg
- 1 Cup Mini Semi-Sweet Chocolate Chips

In a large bowl, combine the first 6 ingredients. In a small bowl combine banana, oil, and egg; stir into dry ingredients just until moistened. Fold in chocolate chips. Fill greased or lined muffin cups 3/4 full. Bake at 350° F for 20-25 minutes, or until muffins test done.



SUBMITTED BY: LAURIAN ESTABROOK

TASTE OF HEAVEN

- 1 Box of Graham Crackers
- 1 8 oz Tub of Cool Whip
- 1 5.1 oz Box Instant Chocolate or Vanilla Pudding
- 1 16 oz Tub Milk Chocolate Frosting

Make pudding according to box directions, then fold in cool whip. Cover bottom of 9x13 inch pan with graham crackers, then spread half of the pudding mixture over the graham crackers. Repeat with another layer of graham crackers and pudding mixture. Create as many layers as you wish.

For the topping, melt frosting in microwave safe bowl, then drizzle over the top. Best if refrigerated for 24 hours. Cut into squares and serve.



**MARCH IS NATIONAL NOODLE MONTH!
KEEP YOUR EYE OUT FOR THE NEXT NE CONNECTION.**

CO-OP CONNECTIONS CARD

DELIVERS DISCOUNTS TO MEMBERS

FEBRUARY 2020 DEALS

ALLRED THEATER

205 E Graham, Pryor, OK | 918.825.2021

Offer Buy a large popcorn and get a large drink for \$1 with paid admission.

CENTER CINEMA

124 S Wilson, Vinita, OK | 918.256.2097

Offer Buy a large popcorn and get a large drink for \$1 with paid admission.

CINEMA 6

1109 N 3rd, Grove, OK | 918.786.7070

Offer Buy a large popcorn and get a large drink for \$1 with paid admission.

SILOAM SPRINGS 6

1102 Carl Street, Siloam Springs, AR | 479.238.8550

Offer Buy a large popcorn and get a large drink for \$1 with paid admission.

SAM'S TIRE

436 S Wilson Street, Vinita, OK | 918.256.7591

Offer Receive a 50% discount off tire rotation and balance.



Use the Co-op Connections card you already have, download the app, or print out your own card at www.connections.coop.

For more than 10 years, NOEC members have enjoyed discounts on local, regional and national offers with the Cooperative Connections Card.

You can still present your card to merchants and businesses to obtain valuable savings.

Use the card you already have or print one at the connections.coop website. You can even download the app and use the card from your phone. While you are at the website, check out all the money-saving offers from a list of local, regional, and national merchants and businesses.



GIFT COUPON

VISIT US AT THE GROVE HOME & GARDEN SHOW

February 7-9, 2020 at the Grove Civic Center

Information on energy efficiency, home products, and electrical safety will be available. Representatives from Bolt Fiber Optic Services will also be on hand to provide information and answer questions.

Bring this coupon and exchange it for a special gift for Cooperative Members only.